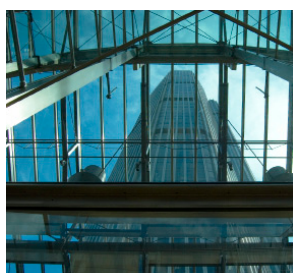


Argyll Environmental CPD Training for Real Estate Lawyers



September 2011

To arrange training, or for further information please contact us on 0845 458 5250 or by e-mail to, mandy.hawkins@argyllenviro.com.

Seminars are subject to availability

Contaminated Land Insurance for Commercial Property

Insurance for contaminated land has been seen as a complex area and where many lawyers have not wished to get involved.

In this 60 minute presentation clarity is provided and we see how insurers assess risk in terms of its likelihood and severity and thereby set premium levels.

We look at how the risk at any property can be modelled to give a number from which an informed and objective decision can be made on whether it would make good commercial sense to take out insurance cover.

We consider what type of cover is provided, what is excluded and typical premiums for different types of commercial property.

The presentation is given by Antony Turck, Managing Director of Ensura and a broker with over 25 years' experience.

Ensura is a registered insurance broker and is part of the Landmark Information Group, part of DMGT and the global leader in environmental data.